

RIGI-FLEX:

A versatile extruded aluminum I-beam type track for straight or curved applications cord operated applications. For manual walk-a-long cyclorama tracks see #1400 cyclorama tracks. Track is available in natural aluminum or optional black finish. Curves may be fabricated at the factory (additional cost), or on location using an optional bending tool. Track is approx. 2-1/2" h x 1" w. Cord operated curved track requires guide pulleys (not included in per/ft. price) to guide operating cord around curves. Rigid installation to building structure or attachment to a pipe batten is required for tracks. Curved tracks can be continuous radius arcs or have one or two partial curves, but reverse curves or serpentine layouts are not possible with this track. A scale drawing of track layout is required to provide correct pricing of necessary parts.

Overall length should not exceed 60' for bi-parting (center opening) track, or 40' for one-way draw track. Walk-a-long tracks can be any length. Minimum curve radius is 2'.

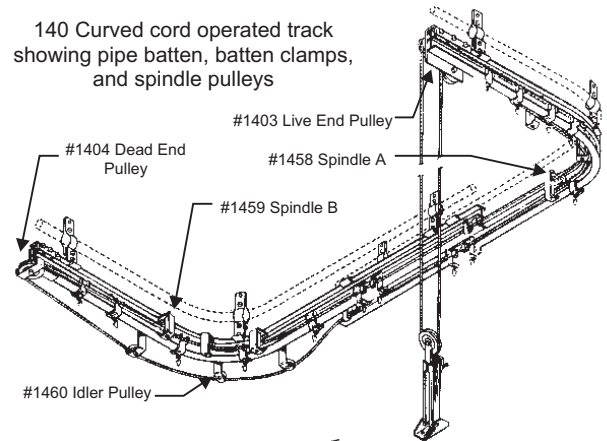
#140	Cord operated curved layout with nylon tired ball-bearing wheels (bending of curves and guide spindle pulleys are not included).	\$ 28.95/ft.
#140R	Same as #140, but with plain bearing wheels.	\$ 27.09/ft.
#141	Cord operated straight track with nylon tired ball-bearing wheels.	\$ 28.95/ft.
#141R	Same as #141, but with plain bearing wheels.	\$ 27.09/ft.
#240	Black finish version of #140 track.	\$ 37.62/ft.
#240R	Black finish version of #140R track.	\$ 31.50/ft.
#241	Black finish version of #141 track.	\$ 34.12/ft.
#241R	Black finish version of #141R track.	\$ 31.74/ft.
#1400	Track channel in unspliced lengths up to 20' ..	\$ 8.02/ft.
#1400BL	Black finish version of #1400 track	\$ 11.21/ft.
#4201	Carrier with nylon tired ball-bearing wheels	\$ 11.34
#1402	Master carrier with nylon tired ball-bearing wheels	\$ 69.29
#1402A	Master carrier with extension arm	\$ 117.51
#4237	Carrier with nylon wheels	\$ 10.52
#1438	Master carrier with nylon wheels	\$ 67.30
#1403	Live end pulley	\$ 60.06
#1403B	Live end pulley for straight track.....	\$ 83.62
#1404	Dead end pulley	\$ 46.82
#1404A	Dead end pulley for one-way draw.....	\$ 46.14
#1403A	Center take-off pulley used when operating lines must be routed horizontally away from the track and then down to the floor or to a curtain machine at a location other than the end of track. Additional mule pulleys will be required.	\$ 64.20
#1403F	Live end pulley for motorized tracks that also fly	\$ 67.65
#4224	Track splice clamp with bolts and nuts.....	\$ 7.23
#4208	Hanging clamp	\$ 2.30
#1423	Ceiling clamp.....	\$ 9.69
#1409	End stop/cord guide for use at track overlap...	\$ 12.20
#4209	Same as 4208 used inverted as end stop	\$ 2.30
#1407	Overlap clamp. Used in pairs at track overlap. Creates approx. 3" centers between tracks.....	\$ 15.11
#1407A	Overlap clamp. Used in pairs at track overlap for continuous arc layout. Creates approx. 5" centers between tracks.	\$ 17.00
#2865	Tension floor pulley	\$ 49.18
#1728/DB8	Black rope 1/4" dia for cord operated tracks ...	\$.60/ft.
#3529	Wire center rope 3/16" dia. with black woven polyester cover for motorized tracks	\$.88/ft.

NOTE: Per/foot prices are for estimating only. Additional parts and crating may be required at extra cost.

For budget purposes, add 50% to prices for tracks of 10' or less.

Prices do not include bending of track curves. A scaled drawing or template is required for all curved track systems to quote a price.

140 Curved cord operated track showing pipe batten, batten clamps, and spindle pulleys



#1400 track channel



#4201 Carrier



#1402 Master



#2865 Tension Pulley



#1403 Live End



#1404 Dead End



#1404A Live End



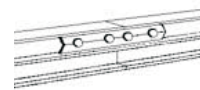
#1403B Live End



#1403A Center Take Off



#1403F Flying Live End Pulley



#4224 Track Splice



#4208 Hanging Clamp



#1423 Ceiling Clamp



#1409 End Stop



#1407 Overlap Clamp

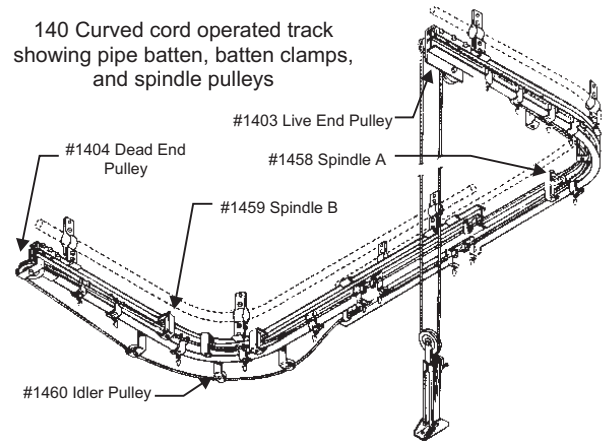


#1407A Wide Overlap Clamp

RIGIFLEX (contd.):

#1458	Spindle A cable guide includes ball-bearing 1" dia pulley at top and ball-bearing steel roller for the return cord. Used on inside of curve at live end half of curved track. Not included in track per/ft prices.....	\$ 35.21
#1459	Spindle B cable guide has ball-bearing steel roller for the return cord. Used on inside of curve at dead end half of curved track. Not included in track per/ft prices.....	\$ 23.06
#1460	Idler pulley bracket has ball-bearing 1" dia pulley at bottom. Used on outside of curves at dead end half of curved track. Not included in track per/ft prices.....	\$ 18.92
#1460A	Overlap idler pulley used on tracks that are a continuous arc curve at each track end at the overlap.....	\$ 41.04
#1408A	Angle clip of 3/16" thick plated steel attaches to top hole of 4208 hanger clamp to support track from 3/8" threaded rod, or to rigidly attach track to beams or building structure.....	\$ 2.85
#1482	Double track hanger used to mount two parallel track 6" apart. Fabricated of 1.5" x 1.5" steel angle and has two sets of clips to attach tracks. Note that when tracks are spaced 6" on this bracket, curtains with standard 12" spacing of grommets will rub against each other and may not pass if one or both are gathered (folded). Actual design may vary from picture.....	\$ 39.09
#1482-8"	Double track hanger for two parallel tracks 8" apart.....	\$ POR
#1482-12"	Double track hanger for two parallel tracks 12" apart.....	\$ POR
#1483	Double track wall bracket of 1-1/2" steel angle for 2 tracks 6" apart and 6" from wall. Can be field modified for one track located 6" to 12" from wall. See Note in description of #1482 double track hanger. Size is 9" high (on wall) by 13.5" deep.....	\$ 74.39
#1713	Clamp for attaching 4208 hanging clamp to pipe batten. Fits 1" size (1.315" OD) sched. 40 pipe.....	\$ 6.36
#1714	Same as #1713 but fits 1-1/4" size (1.66" OD) sched. 40 pipe.....	\$ 7.38
#1715	Same as #1713 but fits 1-1/2" size (1.90" OD) sched. 40 pipe.....	\$ 8.28
#BT-1	Professional track bending tool for use with #1300, 1400, and 4200 aluminum tracks. Size is approx. 48" (including pipe handle) x 15" x 6" and 20 lbs.....	\$ 318.54
#BT-2	Track bending tool for field use by bolting to floor, work bench, or sheet of 3/4" plywood. For use with #1300 or #1400 track. Size is approx. 7.5" x 9.5" x 3.5" high and 5 lbs.....	\$ 128.37
#PB-1	Custom fabricated and curved 1-1/4" size sched. 40 pipe batten for use with curved track. Minimum radius is 2'. Must be ordered and shipped with the track system.....	\$ 14.79/ft.
#PB-2	Custom fabricated and curved 1-1/4" size sched. 40 pipe batten for use with curved track. Minimum radius is 2'. Ordered and shipped without track.....	\$ 17.36/ft.
#PB-3	Custom fabricated 1-1/4" size sched. 40 pipe batten for use with straight track.....	\$ 11.00/ft.

140 Curved cord operated track showing pipe batten, batten clamps, and spindle pulleys



#1458 Spindle A



#1459 Spindle B



#1460 Spindle



#1460A Overlap Pulley



#1408A Angle Clip Adapter



#1714 Pipe Batten Clamp And #4208



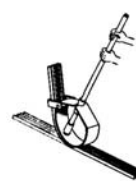
#1482 Double Track Hanger Bar



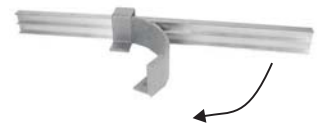
#1483 Double Track Wall Bracket



#BT-1 Track Bender Tool



#BT-1 In Use



#BT-2 Track Bender Tool

NOTE: Per/foot prices are for estimating only. Additional parts and crating may be required at extra cost.

For budget purposes, add 50% to prices for tracks of 10' or less.

Prices do not include bending of track curves. A scaled drawing or template is required for all curved track systems to quote a price.