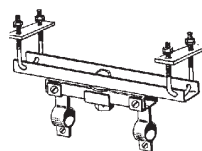


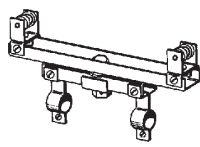
## ROTODRAPER PIVOT ARMS:

Permit adjustable positioning of side leg curtains. May also be used to support and rotate double sided scenery and flats. Models are available with permit 360° rotation and travel on and off stage on tracks. Models with "-A" include a rotation brake device with spring detent stops at 15° increments. Releasable spring friction brakes are available factory installed to prevent the Rotodrapers from rolling on the tracks. Maximum curtain size is 10' wide and 75 pounds. Furnished with clamps to hold 1" ID curtain pipe, and two clamps to prevent curtain ties from sliding off ends of pipe.

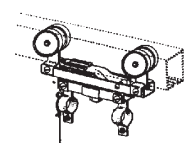
Catalog	Description	PRICE
#06	For fixed mounting on a pipe. ....	\$ 60.63
#06-A	#06 with pivot stops. ....	\$ 78.91
#14	For #140 series Rig-I-Flex tracks.....	\$ 97.83
#14-A	#14 with pivot stops. ....	\$ 125.93
#17	For #170 series Besteel tracks. ....	\$ 70.65
#17-A	#17 with pivot stops. ....	\$ 94.31
#28	For #280 series Silent Steel tracks.....	\$ 72.55
#28-A	#28 with pivot stops. ....	\$ 96.74
#401	Rolling brake for #28 type Rotodrapers. Factory installed.....	\$ 24.25
#402	Rolling brake for #6, #14, or #17 type Rotodrapers. Factory installed. ....	\$ 13.61



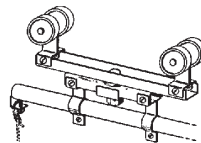
#06



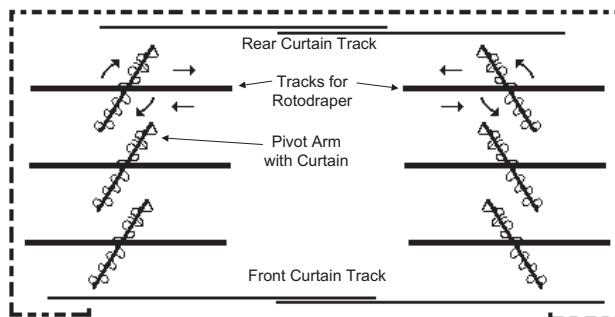
#14



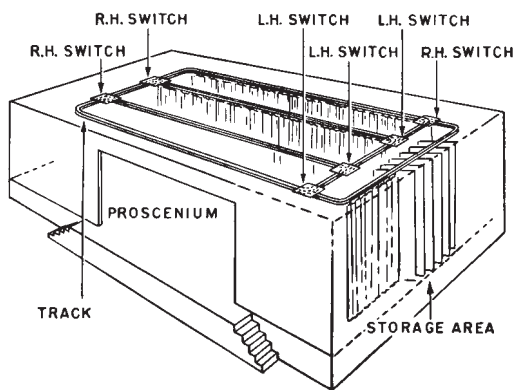
#17 with Brake



#28



Plan View of Stage Using Rotodrapers for Side Leg Curtains



Example for storage of curtains offstage

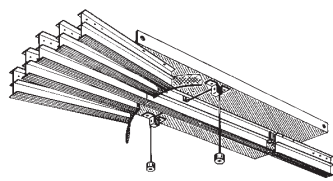
## TRACK SWITCHES:

Permit transfer of curtains between different tracks on a stage or in a studio. May also be used to change scenery by switching several scenic backgrounds from off-stage onto a single track. Motorized versions are also available. Specify left or right hand switches when ordering.

Catalog	Description	PRICE
#133	Two-way switch for #1300 type track.....	\$ 612.11
#143	Two-way switch for #1400 type track.....	\$ 550.75
#143-3	Three-way fan switch for #1400 type track. ....	\$ 669.00
#143-4	Four-way fan switch for #1400 type track. ....	\$ 699.58
#143-5	Five-way fan switch for #1400 type track.....	\$ 716.78
#143-CC	X-type 4-way cross switch for #1400 type track. ....	\$ 622.03
#PTS-2	Parallel track switch used to switch curtains between two parallel #1400 tracks. For 8" track spacing only. Single frame is easier to install than a set of two #143 switches back-to-back.....	\$ 713.33
#423	Two-way switch for #4200 type track.....	\$ 607.75
#503	Two-way switch for #5000 type track.....	\$ 1238.64
#PP1	Telescopic pole, 8' to 14' to operate track switches. ....	\$ 104.84
#PP2	Telescopic pole, 8' to 14' to operate #143-CC.....	\$ 98.84



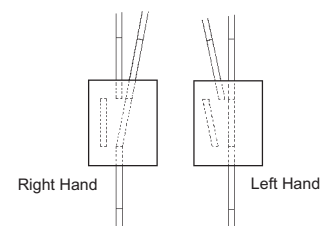
#143



#143-5



#143-CC



Plan view of #143 Track switches (looking down from above)