

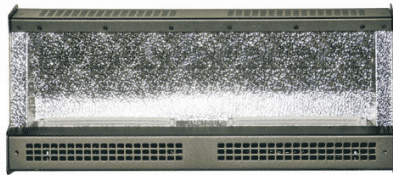


50 Watt Spectra Cyc
With Yoke and Clamp
[Link to data sheet](#)

[Link to Spectra series operation and programming manual](#)



100 Watt Spectra Cyc
[Link to data sheet](#)



200 Watt Spectra Cyc
[Link to data sheet](#)



400 Watt Spectra Cyc
[Link to data sheet](#)

Spectra Cyc LED Cyc Lights:

These spots use linear LED light sources instead of tungsten halogen lamps resulting in lower electrical consumption and heat. For theatrical, studio, and architectural applications. Available as models with 50, 100, 200, and 400 watt light sources. Blends colors via a patented LED diffusion lens and asymmetrical textured reflector to evenly wash vertical surfaces. Light coverage is 40° vertical and 80° horizontal. Silent convection cooling. Choice of 4 LED light sources: RGBA (red, green, blue, amber), RGBW (red, green, blue, white), 3000K white, , or 3000K to 6000K adjustable white.

Designed to sit directly on a floor, or using optional floor trunions, or suspended using optional mounting yoke with C-clamp. Sections can be physically linked together in rows using optional link plates. Choice of black, white or silver housing. Integrated carrying handle on back of housing. Housing profile is same for all models, but the width of each model increases with the wattage.

DMX-512 control in/thru using 5-pin XLR connectors. RDM compatible. Multiple on-board control options of dimming, color, several personality setting, and console free master/slave mode. Dimming engine has 8-bit or 16 bit fading accuracy for high quality fades and minimum color shift during dimming. PowerCon connectors for power in and thru for daisy chaining power between fixtures. Maximum number of fixtures that can be daisy chained varies with the wattage. Internal power supply is self-adjusting for 100 V to 240 V 50/60 Hz.. ETL, cETL, and CE listed for indoor use. Altman brand.

Fixtures includes safety cable, leveling feet (not included with 50 Watt version), and a 5' black power input cable with 15A Edison plug and PowerCon connector. White cable included with white fixture.

50 Watt Spectra Cyc:

Spectra Cyc with 50 watt linear LED light source. Fixture housing is standard black. For white or silver housing, change -B at end of catalog number to -W = white, or -S = silver when ordering. White fixtures are shipped with white power cable. This model includes a mounting yoke and 510 clamp, but no feet. Other models do not include yoke and clamp. This model is available with a track mount for SmartTrack lighting track. Priced on request.

SSCYC50-RGBA-**-B	50 watt Spectra Cyc - RGBA LED array	\$ 719.20
SSCYC50-RGBW-**-B	50 watt Spectra Cyc - RGBW LED array	\$ 719.20
SSCYC50-3K-**-B	50 watt Spectra Cyc - 3000K LED array	\$ 719.20
SSCYC50-3K6K-**-B	50 watt Spectra Cyc - 3K to 6K variable white LED array	\$ 719.20

100 watt Spectra Cyc:

Spectra Cyc with 100 watt linear LED light source. Fixture housing is standard black. For white or silver housing, change -B at end of catalog number to -W = white, or -S = silver when ordering. White fixtures are shipped with white power cable.

SSCYC100-RGBA-**-B	100 watt Spectra Cyc - RGBA LED array	\$ 1436.00
SSCYC100-RGBW-**-B	100 watt Spectra Cyc - RGBW LED array	\$ 1436.00
SSCYC100-3K-**-B	100 watt Spectra Cyc - 3000K LED array	\$ 1436.00
SSCYC100-3K6K-**-B	100 watt Spectra Cyc - 3K to 6K variable white LED array	\$ 1436.00

200 watt Spectra Cyc:

Spectra Cyc with 200 watt linear LED light source. Fixture housing is standard black. For white or silver housing, change -B at end of catalog number to -W = white, or -S = silver when ordering. White fixtures are shipped with white power cable.

SSCYC200-RGBA-**-B	200 watt Spectra Cyc - RGBA LED array	\$ 2399.20
SSCYC200-RGBW-**-B	200 watt Spectra Cyc - RGBW LED array	\$ 2399.20
SSCYC200-3K-**-B	200 watt Spectra Cyc - 3000K LED array	\$ 2399.20
SSCYC200-3K6K-**-B	200 watt Spectra Cyc - 3K to 6K variable white LED array	\$ 2399.20

400 watt Spectra Cyc:

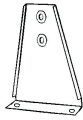
Spectra Cyc with 400 watt linear LED light source. Fixture housing is standard black. For white or silver housing, change -B at end of catalog number to -W = white, or -S = silver when ordering. White fixtures are shipped with white power cable.

SSCYC400-RGBA-**-B	400 watt Spectra Cyc - RGBA LED array	\$ 4400.00
SSCYC400-RGBW-**-B	400 watt Spectra Cyc - RGBW LED array	\$ 4400.00
SSCYC400-3K-**-B	400 watt Spectra Cyc - 3000K LED array	\$ 4400.00
SSCYC400-3K6K-**-B	400 watt Spectra Cyc - 3K to 6K variable white LED array	\$ 4400.00

See following pages for accessories



Black color frame



Floor Trunion



510 Clamp



Unistrut Plate



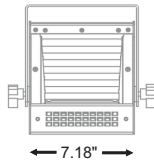
PowerCon AC Power Cable



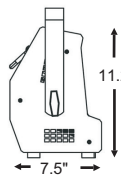
PowerCon Ext. Cable



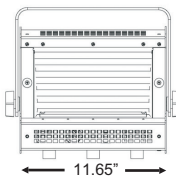
Spectra Cyc 50



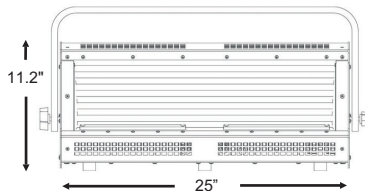
Spectra Cyc 50



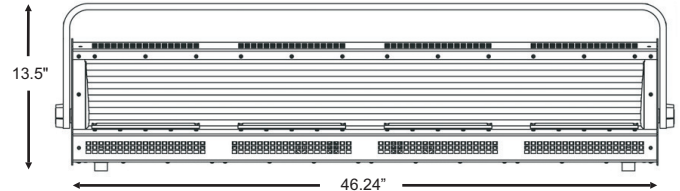
Spectra Cyc 100



Spectra Cyc 100



Spectra Cyc 200



Spectra Cyc 400

Accessories for Spectra Cyc:

Some accessories noted by * are available in colors to match the fixture housing. Standard color is black. For white or silver color, change -B at end of catalog number to -W = white, or -S = silver when ordering

SS-CYC-FT-B	Floor trunions for Spectra Cyc (pair) black, *	\$ 32.80
SS-CYC-Link-B	Link plates with hardware to join 2 Spectra Cycs horiz., black, *	\$ 16.00
SS-CYC50-B	Color frame for 50 watt Spectra Cyc, black, *	\$ 14.00
SS-CYC100-B	Color frame for 100 watt Spectra Cyc, black, *	\$ 14.40
SS-CYC200-B	Color frame for 200 watt Spectra Cyc, black, *	\$ 28.00
	There is no color frame for Spectra Cyc 400.	
SSCYC50-Yoke-B	Yoke and clamp for 50 watt Spectra Cyc, black, *, included	\$ 16.00
SSCYC100-Yoke-B	Yoke and clamp for 100 watt Spectra Cyc, black, *, included	\$ 40.00
SSCYC200-Yoke-B	Yoke and clamp for 200 watt Spectra Cyc, black, *, included	\$ 60.00
SSCYC400-Yoke-B	Yoke and clamp for 400 watt Spectra Cyc, black, *, included	\$ 80.00
PCL-PBG-12-5	PowerCON cable 5' with 15A male Edison plug, included	\$ 28.00
SC-36-BK	Safety cable 36" black, included	\$ 7.00
510	Malleable iron pipe clamp, black, included	\$ 10.40

Canopy Factory installation of spotlight installed on an electrical box canopy cover, for direct wiring.....\$ 32.00

CoilCord Factory Installed 2'-7' coiled cord with molded Edison plug, for display or exhibit use.....\$ 40.00

Unistrut Plate to attach spotlight to Unistrut or similar metal strut. Required hardware (nuts, bolts, etc.) are not included.....\$ 20.00

Installed male 20A stage pin plug.....\$ 23.00

Installed male 15A Edison plug (5' cord included with fixture).....\$ 27.00

Installed male 20A Twist-lock plug\$ 27.00

PowerCon AC Power Cables for Spectra Cyc:

A PowerCon cable is included with the fixtures to connect the fixture to a non-dim AC receptacle for power. The cable is 5' long with a 15A male Edison plug on one end and a PowerCon connector on the other to connect the cable to the fixture. Optional cables with a 20A male stage pin plug or 20A twist-lock plug can be purchased separately (POR), but can not be swapped for the Edison plug cable included with the fixture. Prices for factory installation of the alternate plugs onto the included cable are shown above.

PowerCon AC Extension Cables for Spectra Cyc:

PowerCon extension (jumper) cables can be used to daisy chain AC power between LED Spots. Cable is rated 20A and has PowerCon in and PowerCon out connectors on the ends. Color of cable is black. White cable priced on request. Lex Products brand.

PE7001J-5-PCN	PowerCon extension cable, 5'	\$ 30.55
PE7001J-10-PCN	PowerCon extension cable, 10'	\$ 35.59
PE7001J-15-PCN	PowerCon extension cable, 15'	\$ 40.50
PE7001J-25-PCN	PowerCon extension cable, 25'	\$ 50.25