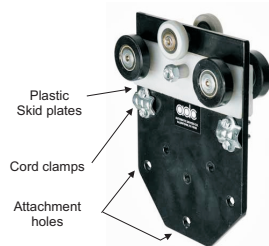


280 Series Tracks:

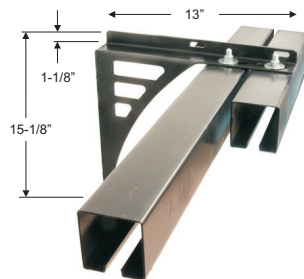
Heavy duty, galvanized steel or aluminum box track for medium, large, and heavy curtains. Available with black finish. Includes 3/8" dia. curtain cord and 5" trim chains on each carrier. Typically used as a bi-parting (center opening) track with cord operation. May also be used as "one-way" cord operated track for moving leg curtains, scrims, or painted drops on and off stage. Special heavy duty carriers are available for moving scenery along the track. Following catalog numbers are for ordering tracks "complete with all normal accessories" (CWANA). Some tracks have optional or required hardware which is not included in the CWANA price, and all CWANA prices require a minimum track length. CWANA prices are for budget pricing of tracks. Please ask for quote.

Catalog No.	Description	CWANA Price
280	Bi-parting operation with center overlap, includes #2801 and #2802 carriers	\$ 39.31/ft.
380	Same as #280, except with black aluminum track and black track parts	\$ 42.65/ft.
281	Same as #280, but with neoprene-tired ball-bearing carriers #2849 and #2850	\$ 79.20/ft.
381	Same as #281, except with black aluminum track and black track parts	\$ 81.72/ft.
282	Same as #280, but with nylon-tired ball-bearing carriers #2851 and #2852; 5" dia. end pulleys #2863 and #2864; and 5" dia. floor pulley #2866	\$ 70.02/ft.
382	Same as #282, except with black aluminum track and black track parts	\$ 79.72/ft.
280-A	Same as #280, but with #2801-B metal body carriers (instead of plastic body)	\$ 41.97/ft.
380-A	Same as #380-A, except with black aluminum track and black track parts	\$ 44.11/ft.
283-N	Same as #282, but with 1/2" dia. rope; 8" dia. end pulleys #2863-A and #2864-A; and 8" dia. floor pulley #2866-A	\$ 78.04/ft.
383-N	Same as #283-N, except with black aluminum track and black track parts	\$ 86.35/ft.
283-R	Same as #283-N, but with neoprene-tired ball-bearing carriers #2849 and #2850	\$ 95.16/ft.
383-R	Same as #283-R, except with black aluminum track and black track parts	\$ 97.56/ft.
284	Single section walk-along track (no cord or pulleys) uses #2801 and #2802 carriers	\$ 33.28/ft.
384	Same as #284, except with black aluminum track and black track parts	\$ 36.40/ft.
284-N	Same as #284, but with 1/2" dia. rope; 8" dia. end pulleys #2863-A and #2864-A; and 8" dia. floor pulley #2866-A	\$ 53.77/ft.
384-N	Same as #284-N, except with black aluminum track and black track parts	\$ 58.89/ft.
284-R	Same as #284-N, but with neoprene-tired ball-bearing carriers #2849 and #2850	\$ 71.57/ft.
384-R	Same as #284-R, except with black aluminum track and black track parts	\$ 69.00/ft.

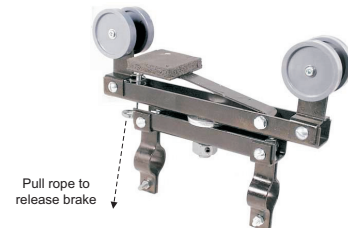


#28Multi carrier

Multi-purpose carrier for scenery or lighting rolls along 2800 track channel. Can be used on cord operated track or manual walk-a-long track. 225 lbs. capacity. Use pairs to support hard scenery panels or a short lighting pipe. See catalog pages for [scenery carriers](#) and on page 8C of the 280 series tracks.



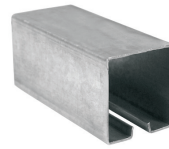
Example of inverted 1483INV wall bracket with bi-parting 280 track at center overlap. Details of this and other styles of wall brackets are on [catalog page 14](#).



#28 Rotodrapeer pivot device rolls along 2800 track to move and rotate leg curtains or light weight scenic elements at sides of stage. Curtain can be up to 8' wide. Requires a pipe batten of 1", 1-1/4", or 1-1/2" size. Shown with rope operated brake pad to hold Rotodrapeer in position on track. See catalog page for [Rotodrapers](#).

#2865
Tension
floor pulley

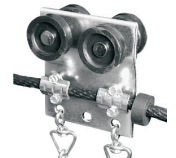
Catalog No.	Description	Price
2800	Track channel, 14 ga. galvanized steel, up to 24' continuous sections. Longer tracks may be assembled using track splices. Size 2-5/8" w by 2-3/4" h, weight 44 oz/ft.....	\$ 15.44/ft.
2800BL	Track channel, 14 ga. black finish steel, up to 24' continuous sections. Longer tracks may be assembled using track splices. Size 2-5/8" w by 2-3/4" h, weight 44 oz/ft.....	\$ 20.30/ft
2800ABL	Track channel, 12 ga. extruded aluminum with black finish, in lengths up to 24'. Size 2-5/8" wide by 2-3/4" high, weight 15 oz/ft.....	\$ 22.10ft
2801	Standard carrier, plastic body with ball-bearing axle, plastic wheels, 5" trim chain.....	\$ 10.78
2802	Standard master carrier, steel body with ball-bearing axles, 4 plastic wheels, 5" trim chains, cord clamps.....	\$ 37.81
2803	Live end pulley, two 4" dia. nylon ball-bearing pulleys	\$ 77.48
2804	Dead end pulley, 4" dia. nylon pulley	\$ 45.57
2865	Floor pulley, spring tension with sleeve bearing nylon pulley.....	\$ 56.52
2807	Overlap clamp. 2 required at center of bi-parting track to create overlap of the curtain halves.	\$ 10.20
2808	Hanging clamp to support track. Recommended max. spacing 7 ft.. Can be used with short length of chain wrapped around a pipe batten or with 2815 batten clamp for rigid attachment.....	\$ 6.92
2809	End stop and cord support	\$ 6.81
2824	Splice clamp for suspended track. Also used to support track at splice	\$ 69.96
2824-A	Splice clamp for ceiling surface mounted track. Requires installer to drill and tap threaded holes in sides of track. Includes correct size thread tap	\$ 73.17
2815	Batten clamp to rigidly attach track to 1-1/2" size (1.90" OD) schedule 40 steel pipe batten. Requires #2808 track clamp and extra bolt and nut. Also used to suspend pipe batten for curtains. Not for use for heavy stage rigging or lighting.....	\$ 10.36
2814	Same as 2815 but for use with 1-1/4" size (1.66" OD) pipe.....	\$ 9.73
2816	Same as 1815 but for use with 2" size (2.37" OD) pipe	\$ 12.47
CPS-1	Center pipe support is used at the center of a bi-parting track at the center overlap to support a track from a pipe batten. Adjacent batten clamps with hanging clamps must be at least 6 feet to either side of center support. Does not include required batten clamps or overlap clamps.	\$ 13.73
2808ID	Idler pulley attached to 2808 hanging clamp 2808 to help prevent return cord outside the track from sagging below track into audience view	\$ 39.17
2849	Carrier, neoprene tired, metal body, ball-bearing wheels	\$ 48.96
2850	Master, metal body with 4 neoprene tired ball-bearing wheels, and 5" trim chain.....	\$ 106.63
2851	Carrier, metal body with nylon-tired ball-bearing wheels, and 5" trim chain.....	\$ 32.36
2852	Master, metal body with 4 nylon-tired ball-bearing wheels, and 5" trim chain.....	\$ 81.20



#2800



#2801



#2802



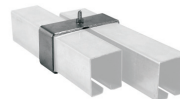
#2803



#2804



#2865



#2807



#2808



#2809



#2824



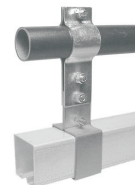
#2824-A



2808ID Idler



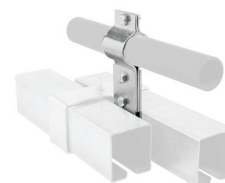
2814, 2815, 2816 shown upright to suspend batten pipe



Inverted 2815 with 2808 to hang track from batten



CPS-1



#CPS-1 with 2815



#2849



#2850



#2851

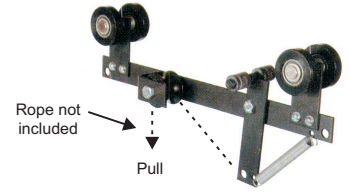


#2852

Catalog No.	Description	Price
2839	Overlapping master carrier has an extended arm, supported by a 5th wheel, to attach the leading edge of curtain. Used on single section tracks (no track overlap) with center opening (bi-parting) curtains. Two required per track. Includes 5" trim chains.....	\$ 241.43
2802B	Extended master carrier with spring loaded brake. For walk-a-long tracks only. Brake releases by pulling down on cord (not included) while moving carrier along track. Also avail. as 4 ft. wide version. Yes 4 feet wide. POR.....	\$ 332.97
FSBTP3	Floating sandbag tension pulley. Black nylon fabric bag with Velcro sealed top holds up to 10 lbs sand has 3" dia. pulley attached with steel gated hook. Use with curtain tracks that fly.....	\$ 123.48
FSBTP5	Same as FSBTP5, but with 5" dia. pulley.....	\$ 167.14
FSBTP8	Same as FSBTP5, but with 8" dia. pulley.....	\$ 225.97
2805	Floor pulley, adjustable with sleeve bearing nylon pulley	\$ 64.56
2806	Floor pulley, non adjustable	\$ 57.48
TC2	Trim chain, 5 links. Included with all of the 280 series carriers. Used to extend existing trim chains or replace missing chains. Links provide approx. 1/2" height adjustment increments.	\$ 1.30
TC2BL	Trim chain with, 5 links, black finish.	\$ 1.54
TCATTCH	Factory attach trim chain to carrier or end pulleys	\$.75
DBP-12	Curtain cord 3/8" dia. black double braided polyester. Equal to ADC#2828	\$ 1.47/ft
2830	Curtain cord 1/2" dia. black for use with #283-N and 283-R tracks.	\$ 2.10/ft
2829	Wire center cord 1/4" dia. has glazed woven cotton cover. For use with machine operated tracks which have 1/4" grooves on the cable drum.	\$ 1.21/ft
3529	Wire center cord 3/16" dia. has woven polyester cover. For use with machine operated tracks which have 3/16" grooves on the cable drum.	\$.93/ft
2801-A	Special carrier for replacement of broken carriers or for inserting additional carriers on a track without removing and re-threading the track cord. Metal body has removable cord keeper.	\$ 28.38
2801-B	Carrier, steel body with ball-bearing axle, plastic wheels, 5" trim chain.....	\$ 13.95
2803-B	Center take-off pulley, two 4" dia. ball-bearing pulleys	\$ 286.60
2803-F	Flying live end pulley, with two 4" dia. nylon ball-bearing pulleys and two 1" dia steel ball-bearing mule pulleys.....	\$ 308.81
2803-H	Horizontal live end pulley used instead of 2803 live end to route curtain cords horizontally up or down stage from end of track, instead of directly down to the floor. Includes 5" trim chain. ...	\$ 119.38
2863	Live end pulley, two 5" dia. nylon ball-bearing pulleys	\$ 211.05
2863-A	Live end pulley, two 8" dia. nylon bb pulleys... ..	\$ 254.41
2864	Dead end pulley, 5" dia. nylon bb pulley	\$ 146.58
2864-A	Dead end pulley, 8" dia. nylon bb pulley	\$ 168.58
2866	Adjustable floor pulley, 5" dia. nylon bb pulley	\$ 128.44
2866-A	Adjustable floor pulley, 8" dia. nylon bb pulley	\$ 343.75
2864-A45	Slanted dead end pulley used when track system needs to fit in narrow ceiling pocket or 2 track systems are placed closely side-by-side. Has 8" dia ball bearing pulley at 45 deg angle. Clamps to end of track, but extended frame must be supported by overhead structure. See cad drawing for details and dimensions	\$ 193.86



#2839



#2802B



#FSBTP3



#2805



#2806



#TC2



#DBP-12



#2830



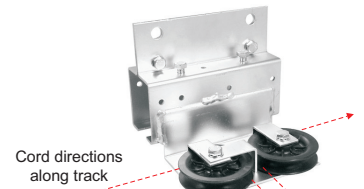
2829 or #3529



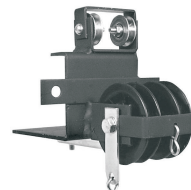
#2801-A



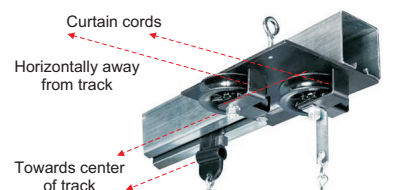
#2801-B



#2803-B



#2803F



2803H Horizontal live end pulley



#2863 5"



#2864 5"



#2866 5"



#2866-A 8"



#2863-A 8"

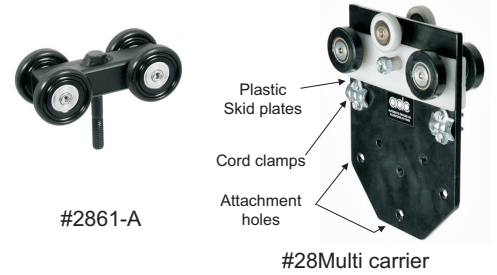


#2864-A 8"

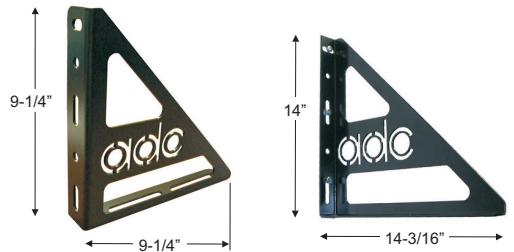
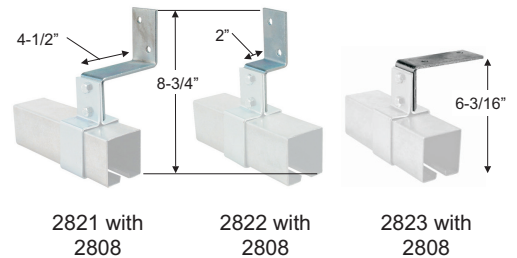


#2864A45 8"

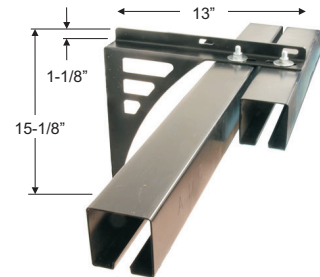
Catalog No.	Description	Price
2861-A	Basic scenery carrier has 4 nylon tired ball-bearing wheels on solid steel body and 3/8" dia. threaded bolt to attach scenery. Bolt is welded in place so it will not turn. On request can be furnished with loose bolt. Capacity is 150 pounds.	\$ 96.67
28Multi	Heavy duty carrier for scenery or lighting fits 2800 or 2800A track. A pair of these could be used to move hard scenic flats or a short lighting pipe along a track. Fabricated of 1/4" steel plate 6" wide with 4 nylon tired bb wheels and 2 extra wheels at top to prevent tipping, cord clamps, and lubricated plastic skid plates to reduce noise when moving. There are three 3/8" dia. holes for attaching equipment - one center bottom, and two at sides. Can be used on cord operated track or manual walk-along-track. Capacity is 225 lbs.. Track must be well supported to handle load. Not intended for supporting or flying people. Available with a 4" square electrical J box bolted to one side for a lighting cable. Use individual carriers to festoon electrical cable from 28Multi along the track. POR.....	
2821	Pocket mounting bracket for 2800 track. Steel offset bracket to attach track to one side of a recessed ceiling pocket. Center of track is approx. 4-1/2" from wall. Height from top of bracket to bottom of track is approx. 8-3/4". Requires #2808 hanging clamp and a set of bolt, nut, and lockwasher, not included. If track is bi-parting with overlap of tracks at center, then one half of track will use 2821 brackets and other half of track uses 2822 brackets to maintain tracks parallel to wall. These are only used if track is installed inside a ceiling pocket and the curtain top is below the ceiling. Can not be used for wall mounted tracks, as there is no room to allow the curtain to pass without rubbing heavily along the wall.....	\$ 175.51
2822	Short pocket mounting bracket. Center of track is approx. 2" from wall. See description above.....	\$ 25.37
2823	Ceiling bracket to attach track to a horizontal structural surface. Height from ceiling to bottom of track is approx. 6-3/16". Easier to use than drilling thru top of track to insert bolt or screw thru the ceiling. The ceiling brackets can be installed first, then the track lifted up into place. Requires 2808 hanging clamp and some bolts, nuts, lock washers (not included).....	\$ 25.75



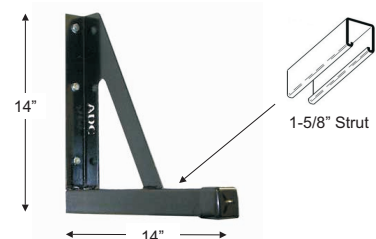
[Link to other scenery carriers](#)



1383UNI wall bracket 1483UNI wall bracket



Example of inverted 1483INV wall bracket with bi-parting 280 track at center overlap



STRUTBR wall bracket

Wall Brackets:

Wall brackets are fabricated from 1/8" steel with a black powder coat finish. Wall side has several slots for attaching to wall using suitable hardware (not included). Track side has 3/8" wide slots for attaching one or two tracks. The 280 series tracks are attached by drilling a hole in top of track (by installer) and bolting thru a slot in the wall bracket. One set of bolt, nut, and washer are included with wall bracket. Must specify for 280 series track when ordering. Wall brackets can have custom logo cut into the wall of the bracket where the ADC logo is located. Priced on request.

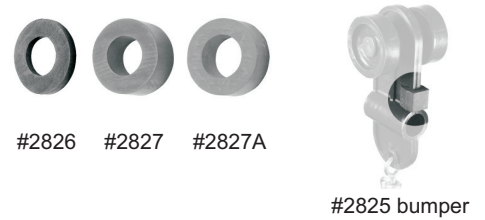
1383UNI	Wall bracket 9-1/4" high by 9-1/4" deep. Two slots on bottom to attach track. Useful for single 280 series track at 6" to 8-1/2" from wall, or a bi-parting center overlap 280 series track at 7-1/2" from wall.	\$ 39.48
1483UNI	Wall bracket 14" high by 14-3/16" deep. Two slots on bottom to attach track. Useful for single 280 series track 6" to 13" from wall, or bi-parting 280 series tracks at 8" or 10" to 12".....	\$ 68.52
1483INV	Inverted wall bracket 15-1/8" high by 13" wide. Wall side points down behind track. Top side has 13" arm 1" high to attach track. Requires 1-1/8" of space above track. Side of arm has slots at 6-1/2" and 12", which can be used to provide additional support of bracket from above, if desired. Useful for single 280 series track at 10" or 12", or a bi-parting 280 series track at 10" from the wall....	\$ 43.24
STRUTBR	Wall bracket is 14" high by 14" wide. Bottom is of 1-5/8" metal strut with continuous slot at bottom to attach track. Includes plastic end cap and strut nut with bolt. Track can be located up to 13" from wall (end cap may need to be removed). 280 track is attached to bracket by drilling hole in top of track channel, and attaching to a strut nut inside the strut. Different hardware is included with other tracks. Specify track to be used so correct size strut nut and bolt can be supplied by factory. Black finish.....	\$ 76.39

[Link to catalog page 14](#) with more wall bracket choices

Missing Parts:

Some of the 280 series tracks have rubber grommets or molded plastic "bumpers" between or on the carriers to reduce noise when the carriers bump into each other when moving along the track. If the curtain cord breaks or is replaced due to wear, the rubber grommets often fall and become lost. Grommets are also used on cord between backpack guides (see below) and carriers. Here you can find replacements.

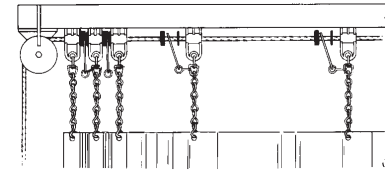
2825	Replacement rubber clip-on bumper for 2801 and 1701-P carrier bodies.	\$.19
2826	Rubber spacer 1/8" thick is installed on curtain cord between carrier and back-pack guides for quieter operation.	\$.26
2827	Rubber spacer 7/16" thick is installed on curtain cord between back-pack guide and next carrier. Also used on tracks between metal body carriers that do not have rubber bumpers.	\$.36
2827-A	Rubber spacer with larger 5/8" dia. hole for use on tracks having 1/2" dia. curtain cord.	\$.46



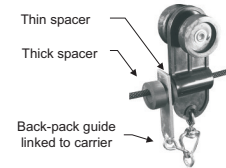
Back-Pack Guides (Rear-fold Guides):

Are used to force a curtain to gather at the off-stage ends of curtain tracks, instead of the normal method where the curtain first gathers from the center as the master carrier pushes the curtain along the track. With back-pack guides installed, the curtain appears to slide out of sight. Principal use is for curtains which must pass thru a slot in a wall to store in a wall pocket. Also may be used with painted backdrops to create a sliding mural effect. *Back-pack guides considerably increase the initial effort required to open the curtain, because the full weight of the curtain must initially be moved.* This is not a problem on machine operated tracks. Also known as "rear-fold guides". Back-packs are installed on side of carrier towards end pulleys, and are not used on masters or between the last carrier and the end pulley.

2833	Back-pack guide for hand operated #280 tracks with 3/8" dia. cord. Includes 2 rubber spacer grommets.	\$ 5.82
2833-A	Back-pack guide for hand operated #283 tracks with 1/2" dia. cord. Includes 2 rubber spacer grommets.	\$ 8.52
2834	Back-pack guide for machine operated #280 tracks with 3/16" dia. wire center cord. Includes 2 rubber spacer grommets.	\$ 5.84



Back-Pack Guides installed



2801 carrier with 2833